

# 透科自动化

LUC KV8000  
ethernetip)

Ethernet/IP LUC KV8000



2023-3-23

2023 03 23

20223 03 23

1.

KV STUDIO Ver.10G

2.

KV8000	Ethernet/IP	IO	KV STUDIO Ver.10G
IO	.eds	IO	IO

3.

- KV STUDIO Ver.10G
- IO SRX\_EP20221128.eds

4.

4.1

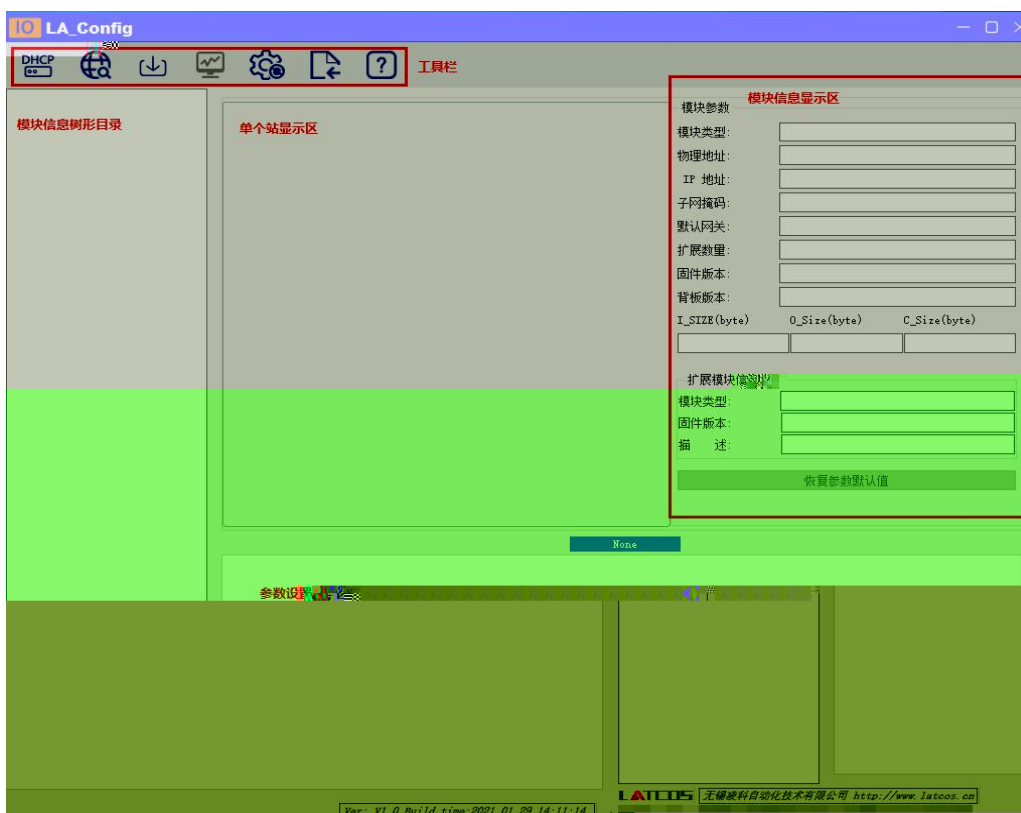
1. KV8000 IO
2. PLC Ethernet IO

4.2

IP

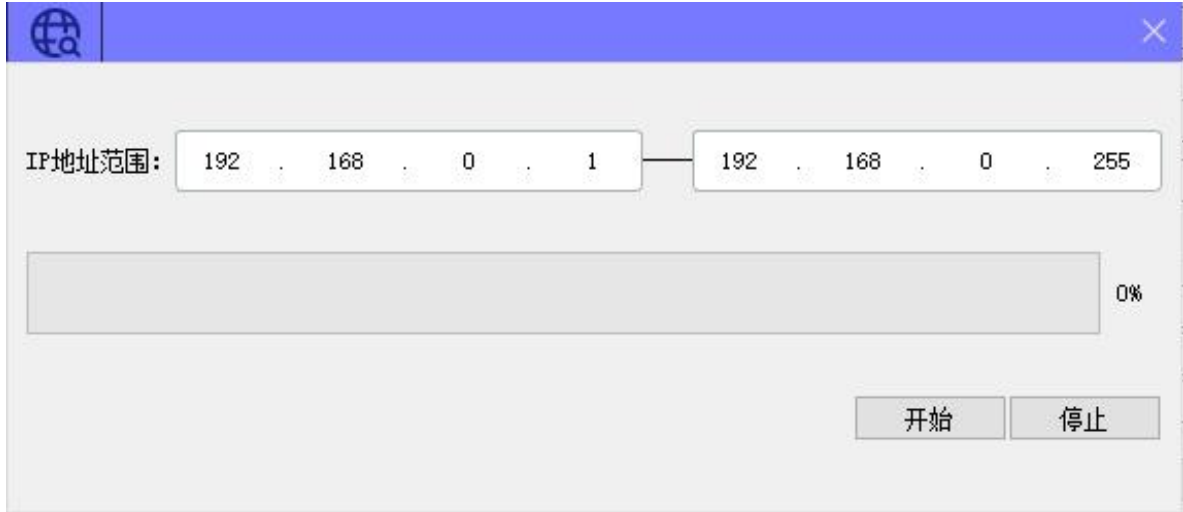
4.2.1

LAEConfig IP IP 192.168.0.x

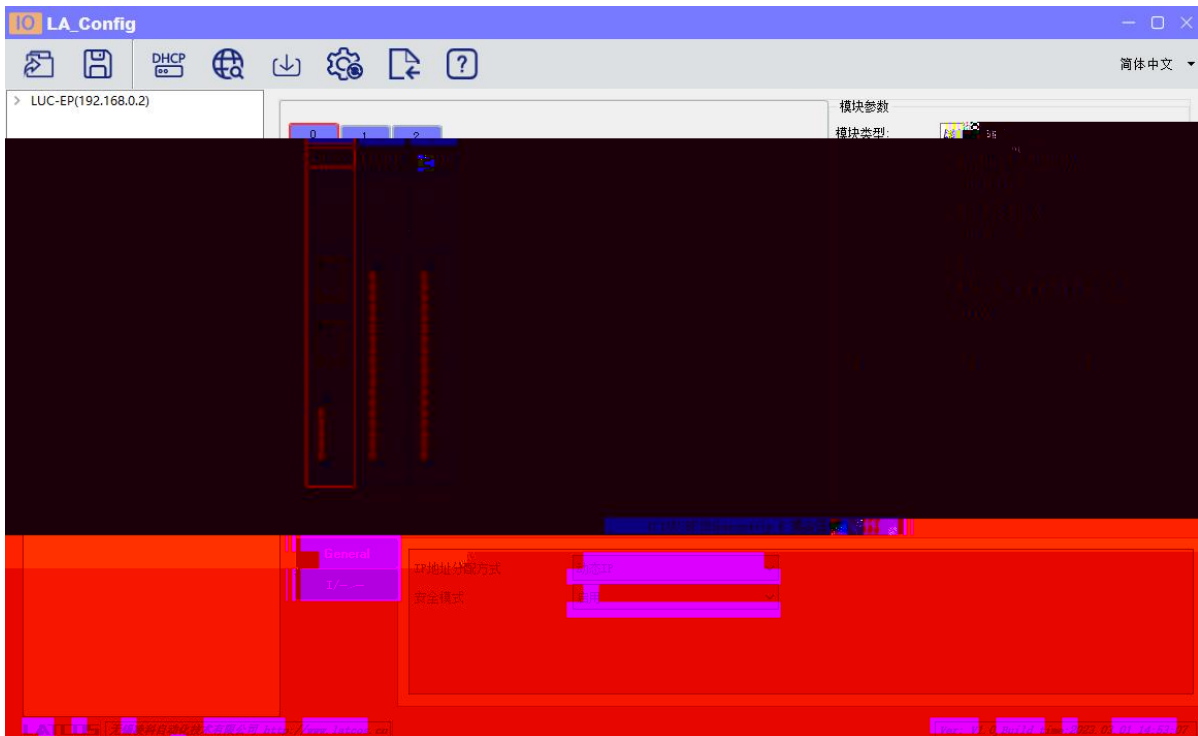




4.2.2



“ ”    IP    IP



4.2.3


IP

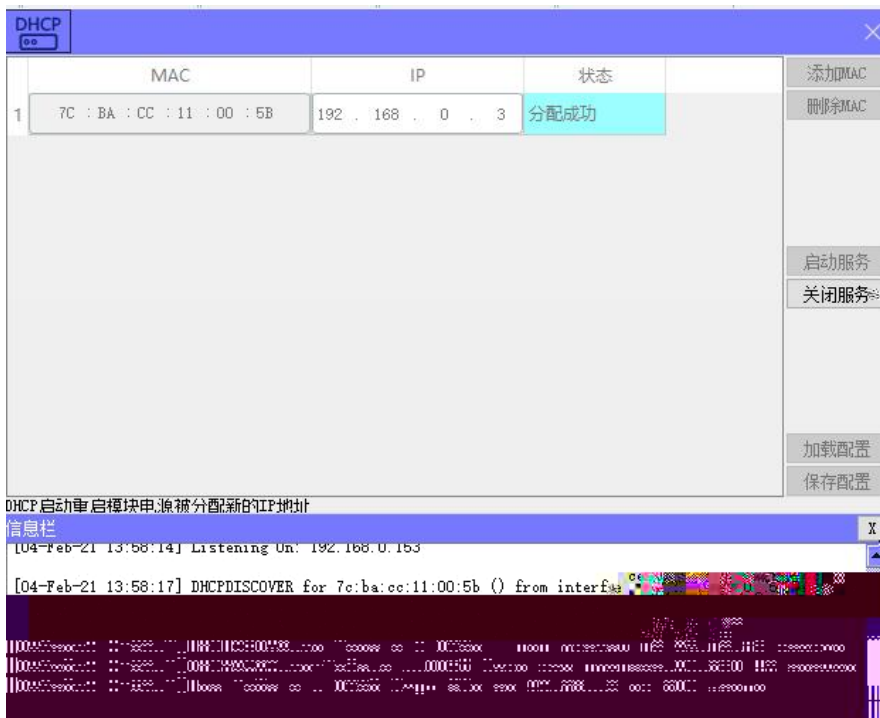
1

"IP"

IP"



 DHCPService " MAC" " MAC"  
 MAC IP " "  
 IP



" "



mac	IP地址	子网掩码	默认网关	模块名称	状态
-----	------	------	------	------	----

扫描时间 5:00 全局扫描 修改IP 恢复出厂设置 重启模块

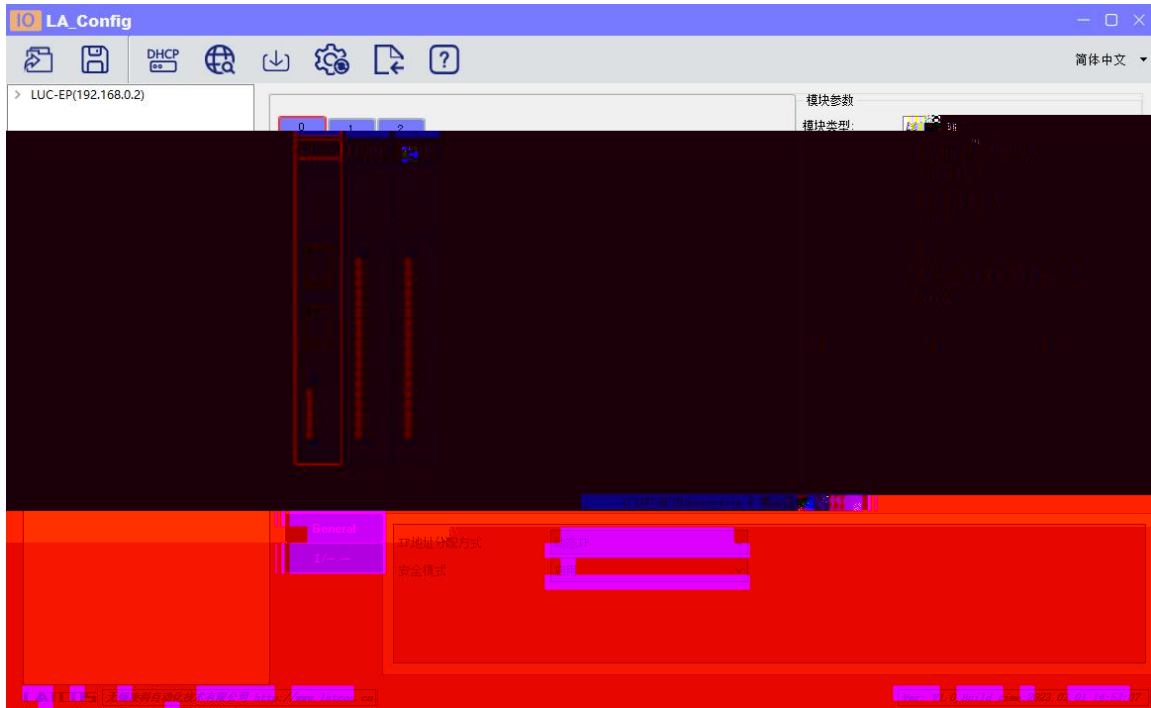
mac	IP地址	子网掩码	默认网关	模块名称	状态
00:0C:29:00:00:00	192.168.0.3	255.255.255.0	192.168.0.1	有线网卡	在线

扫描时间 5:00 全局扫描 修改IP 恢复出厂设置 重启模块

扫描进行中 100%

IP " IP" IP

4.2.4



4.2.5

/

/

1

2) DO\_ 0.7 DQ0.x bit

DQ0.x Bit0 DQ-0.0 "Error Mode"

bit "1" "Error Value[7..0]" bit DQ0.x

3) DO\_ 0.7 "Error Mode[7..0]" bit

DQ

4)



5.

LUC-EPB

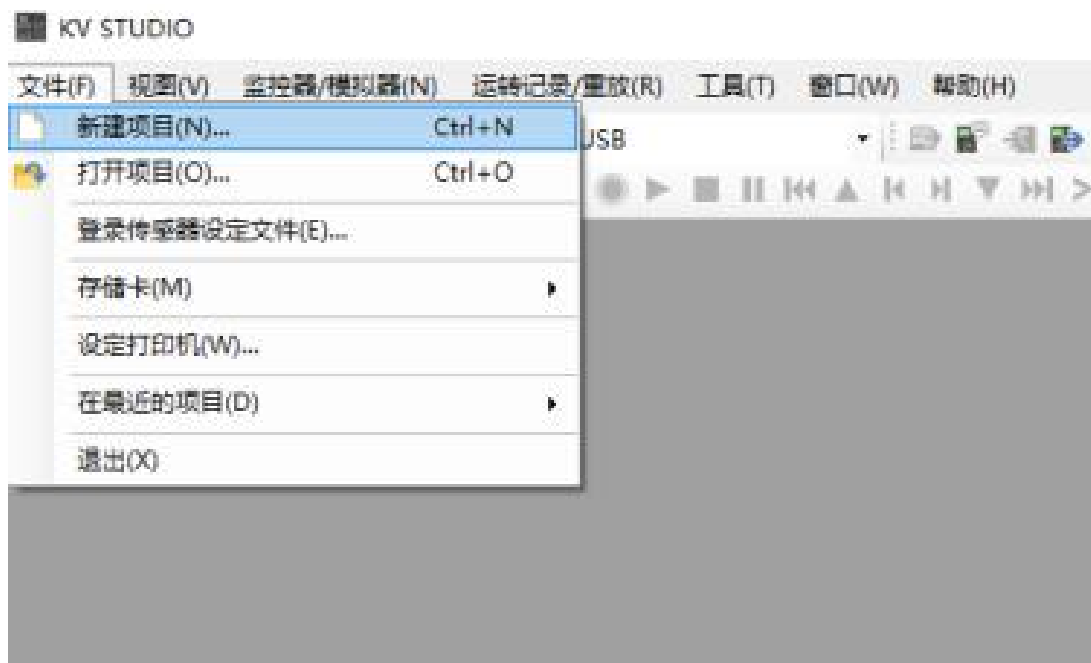
PLC(KV8000)

KV STUDIO

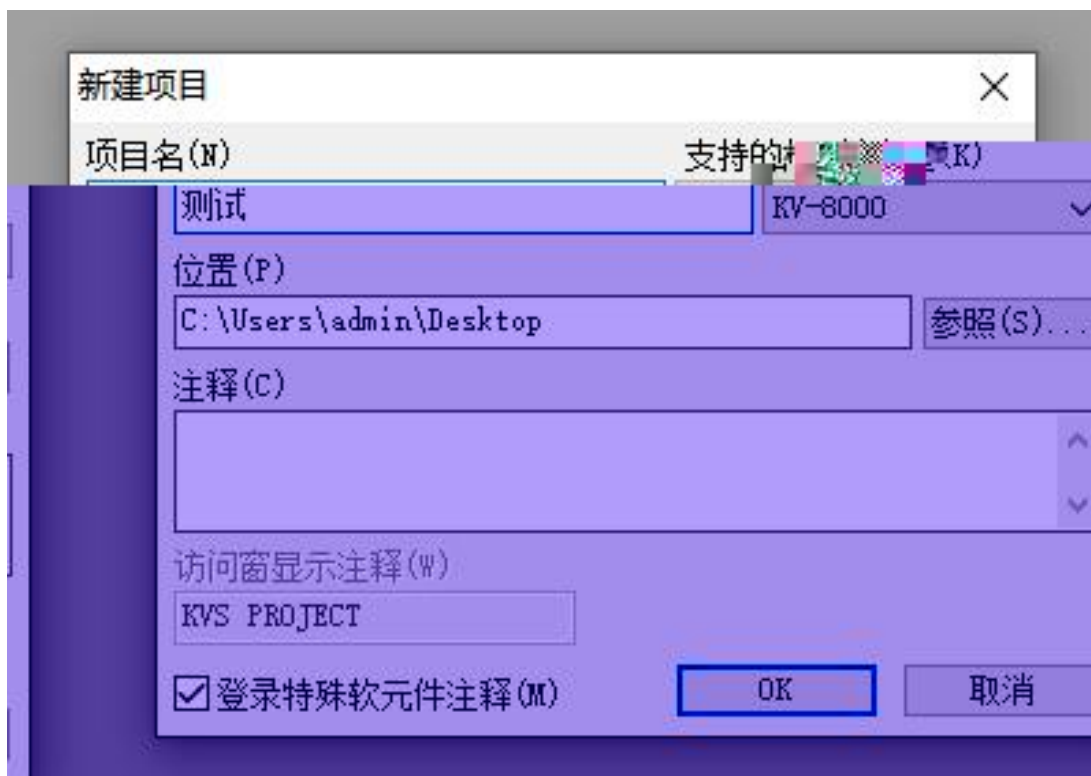
5.1

5.2

KV STUDIO

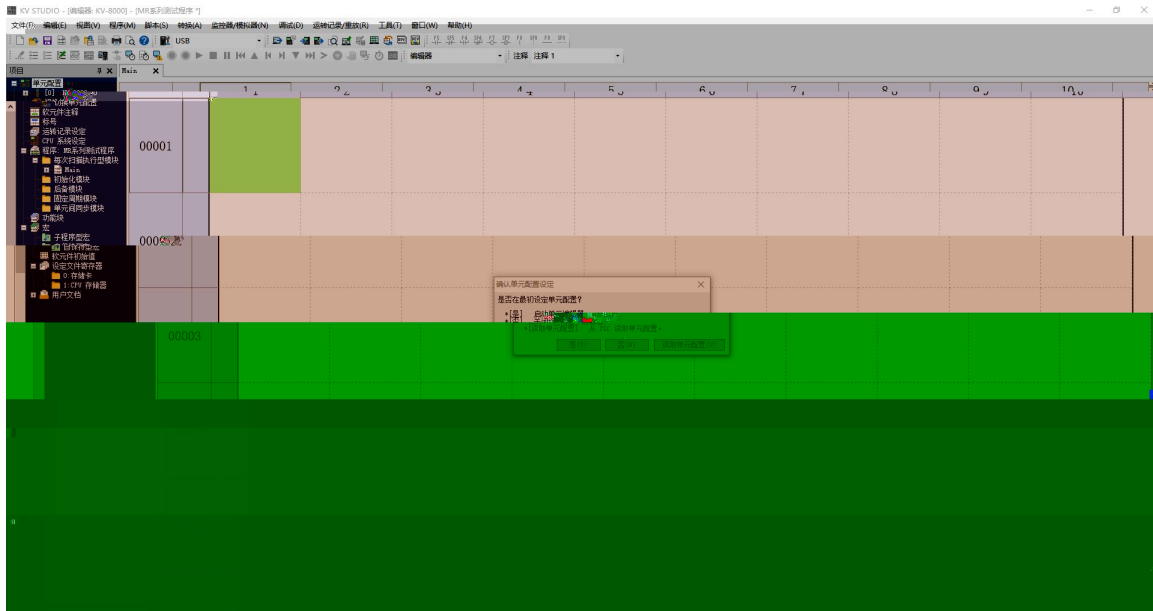


PLC



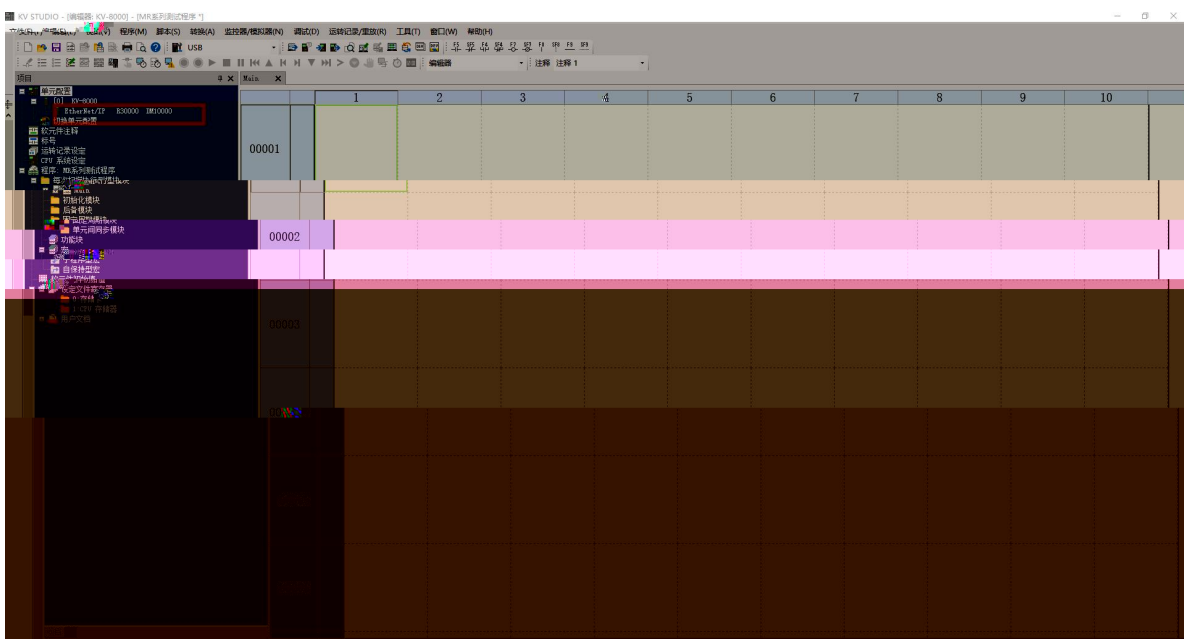


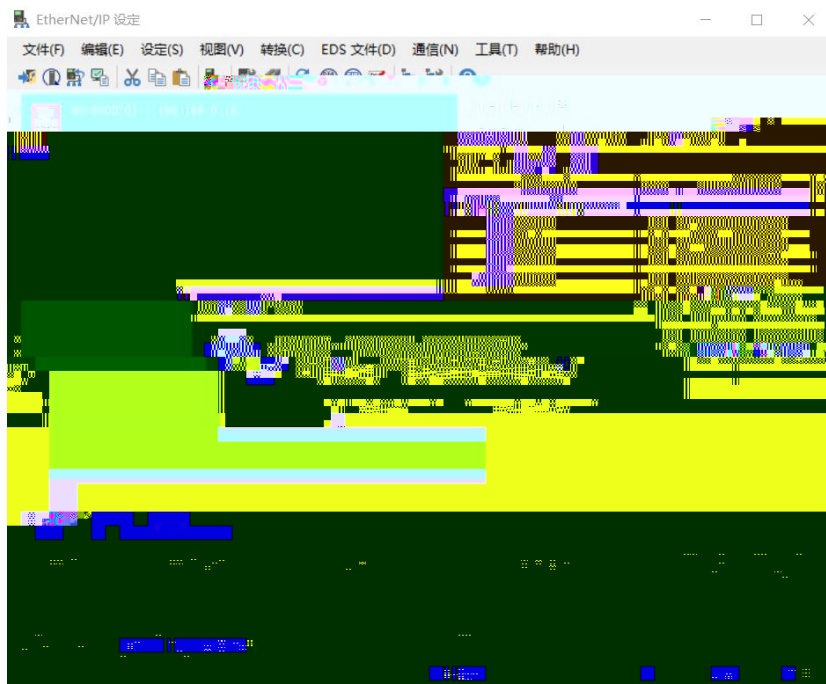
## 5.3 EtherNet/IP



PLC

EtherNet/IP





## 5.4 EDS

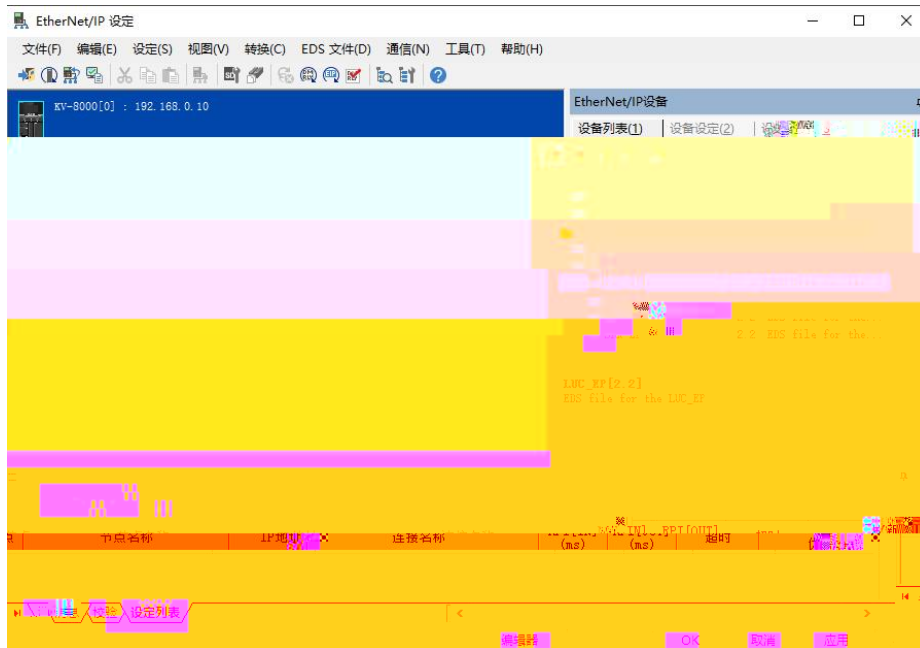
“EtherNet/IP ” “EDS ” ” ”



EDS

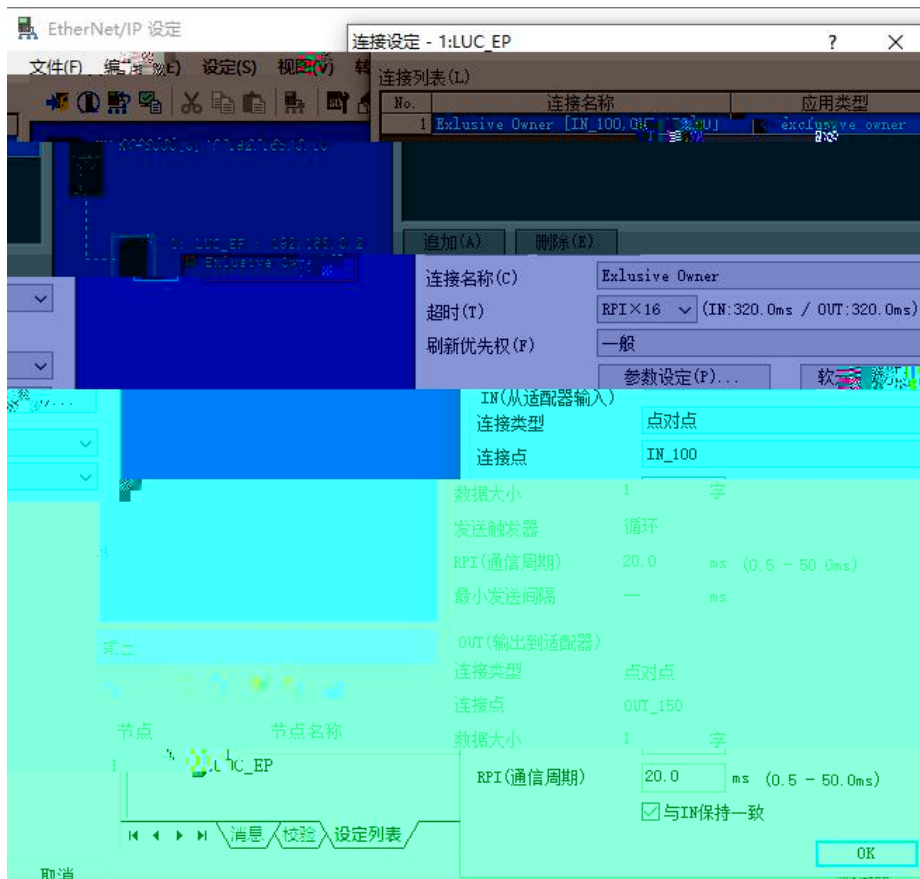
EDS





IP

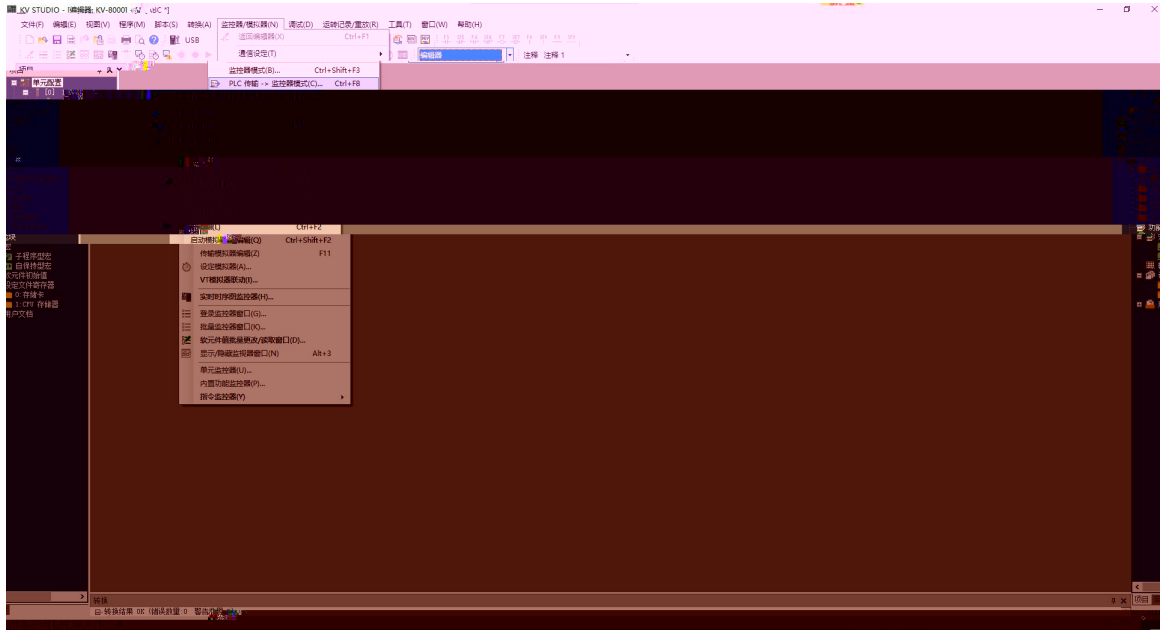
"Exclusive Owner"





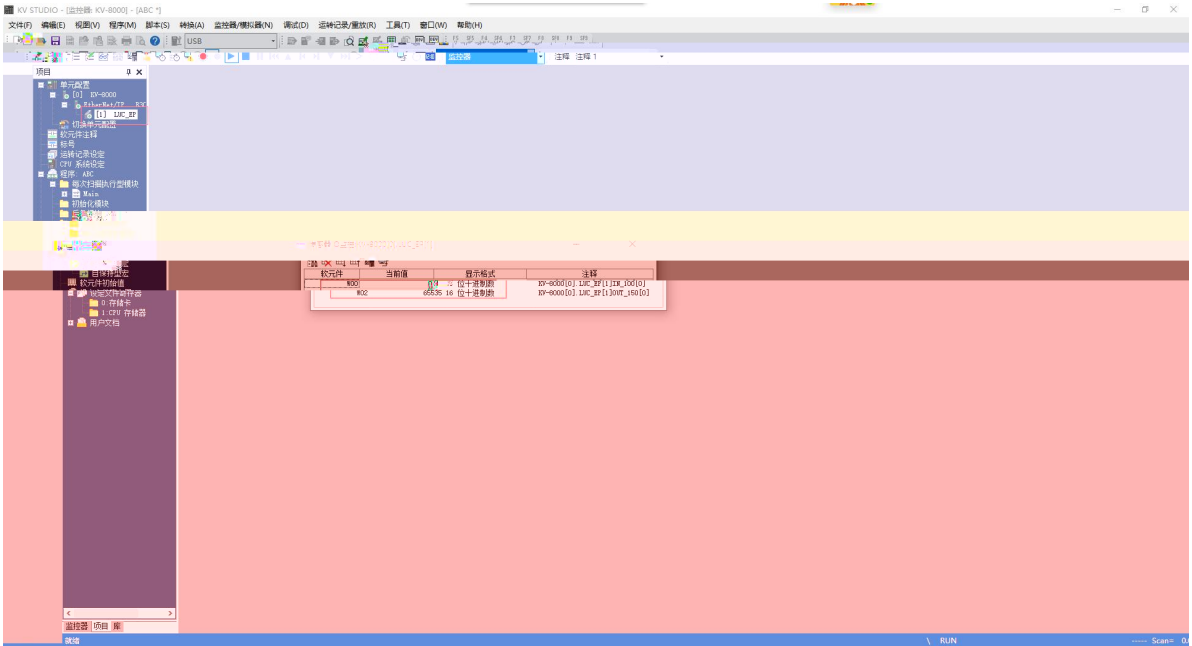
PLC

plc



5.6

PLC



6.

1.

windows

ping

IP

ping

ping

IP

IP

2

RUN

ERR

IP

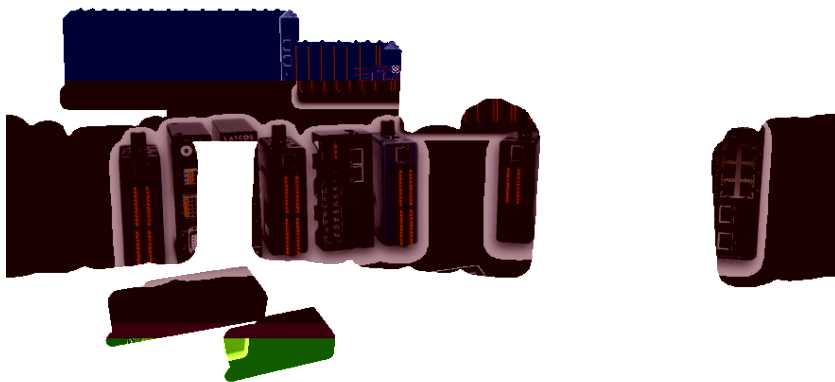
IP

IP



技科自源  
**LATCOS**

0510-85888030



[www.latcos.cn](http://www.latcos.cn)

3

0510-85888030

7 701